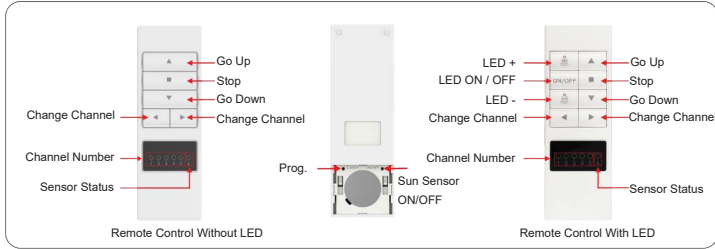


I. Main Features

- Bidirectional FSK receiving module, receiving frequency 868.3 MHz.
- Electronic limit switch
- Possibility to set 4 intermediate positions.
- Operation movements by in pulse or continuous mode.
- Change movement direction from the motor head.
- Protection to avoid overvoltage.
- Overheating protection, after 4-10 minutes of continuous movement, if the motor exceeds 60° degrees, the motor stops running during 3-10 minutes.
- The bidirectional communication protocol allows the identification of the sun/wind sensor signals.
- The sun sensor can be activated / deactivated by remote control.
- The AM45 PLUS BIDI FSK LED model, has the possibility to connect LED strips (24V DC - máx. 30w adjustable).



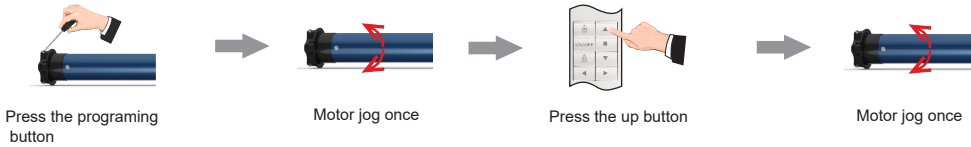
II. Operation Instruction

1. Programming Remote Control Note: If no action is taken within 30s, it will automatically exit programming mode.

Method 1 Note: Only the remote control you are pressing will be programmed.

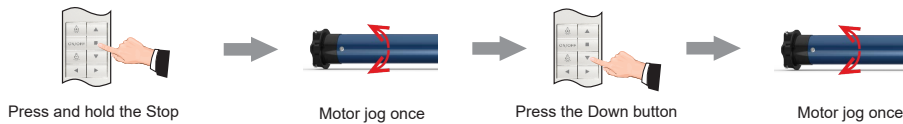


Method 2 Note: Any A-OK remote control can be programmed

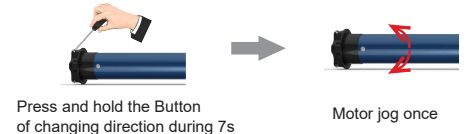


2. Change Direction

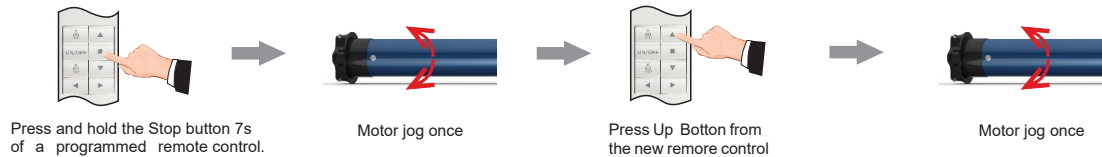
Method 1



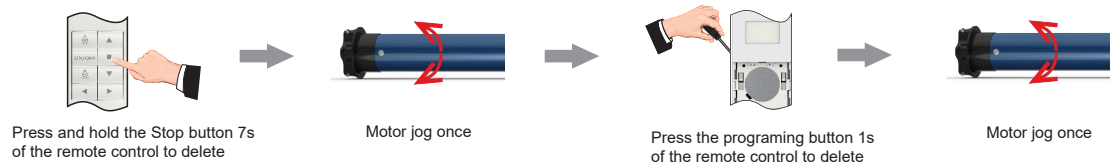
Method 2



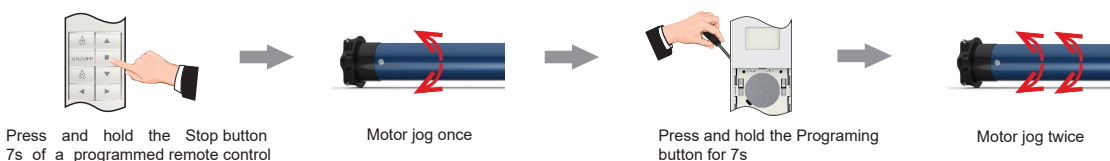
3. Add New Remote Control



4. Delete Remote Control

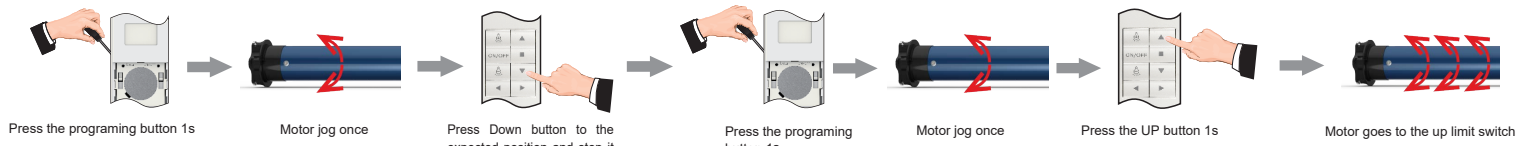


5. Delete All Memories

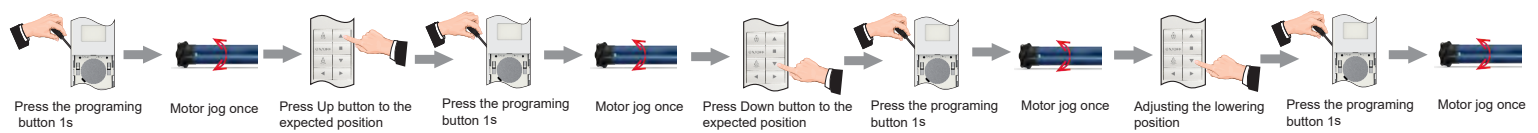


6. Set Limit Switch

Method 1 Automatic Adjustment

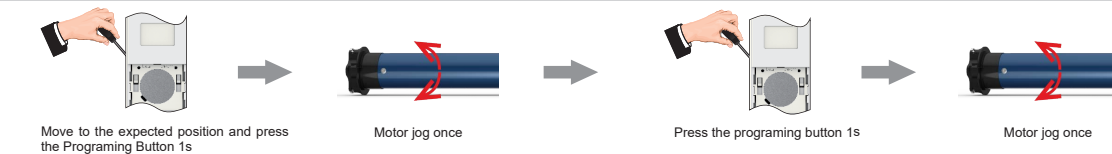


Method 2 Manual Adjustment

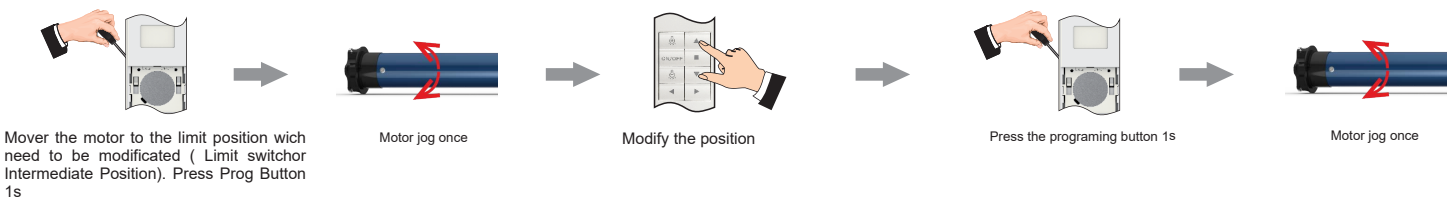


7. Intermediate Position Programming

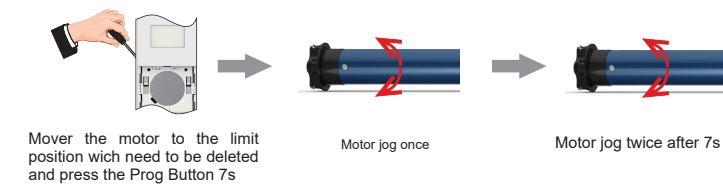
Note: It's only possible to add intermediate position, if the use the Manual Adjustment of the limit switches



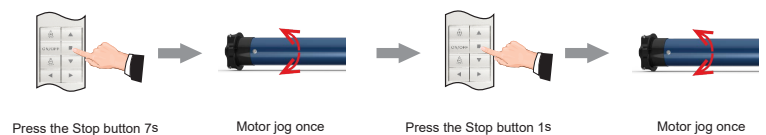
8. Modification of Intermediate Position and Limit Switch



9. Delete Intermediate Position

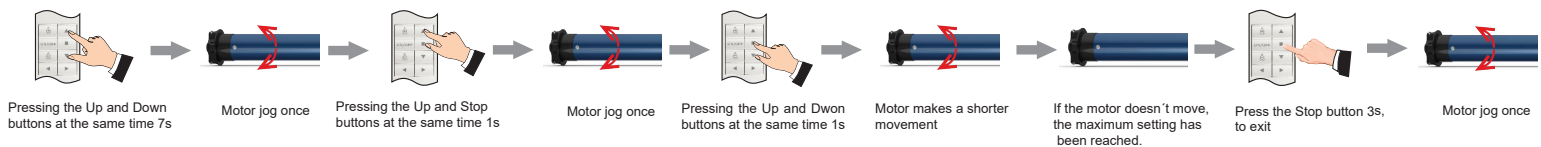


10. Dot move and continuous move conversion

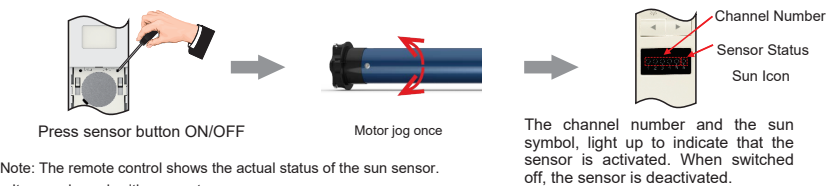


Note: - The motor moves in continuous mode by default.
- If the limit switches are not programmed, it will move in pulse mode.

11. Pulse Movement Adjustment



12. Sun Sensor ON/OFF



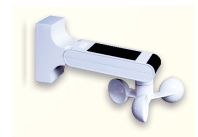
Note: The remote control shows the actual status of the sun sensor.
It can only work with one motor.
Doesn't work with group control.

13. Operation of the Sun / Wind sensor

When wind is detected, the awning will retract.

The sensor will check the wind status every minute.

If there is no wind after 3 minutes and the sun sensor is activated, the awning will open.

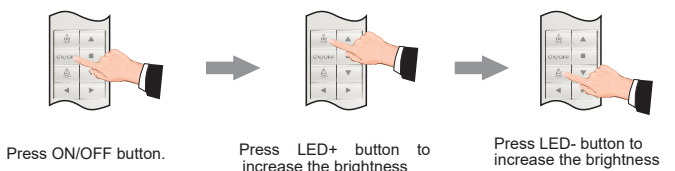


AC302-02 AC Sun/Wind Sensor

14. Operating Information

- A maximum of 6 different stops can be set. Two limit switches and 4 intermediate positions.
- Each intermediate position can be set and deleted individually.
- The limit switches can be modified, but not deleted individually, but we can delete all motor's memory
- In pulse mode, press the up/down button, the motor will make small movements. If you press the up/down button for more than 3 seconds, the motor will run continuously.
- To avoid intermediate points, press the up/down button twice with an interval of 1s.
- When the wind/sun sensor is activated, the motor will move to the end of the limit switch, without stopping at intermediate position.

15. LED Light Control



III. Trouble Shooting

No	Problem	Cause	Solution
1	The motor doesn't move or moves very slowly.	Incorrect voltage or Incorrect installation	Change to matched voltage or Choose suitable motor torque
2	The motor stops suddenly during working	The motor has been exceeded overheating protection or Power was cut off	After the motor with natural cooling, it will come back to work again
3	The motor start itself	The Sun/Wind sensor is working	Confirm Sun/Win sensor operation